

ACTUAL SIZE



**yoyo**<sup>TM</sup>*log*

Humidity.  
Temperature.  
Voltage. Current.  
Radiation. Pulse.  
Light. Pressure.

**DATA LOGGING.**  
**SIMPLY.**

# yoyo DATA LOGGERS

Wind, water, solar radiation, rain, heat - these are just some of the environmental conditions data loggers have to brave in operation. To ensure durability and accuracy in readings, despite these conditions, the yoyo data loggers are robust and durable.

## Contents

Benefits	page 3
Data loggers for:	
Temperature, humidity and condensation loggers	pages 4-5
Thermocouple loggers	page 6
Temperature, humidity and barometric pressure loggers	page 8
Micro voltage logger	page 10
Electrical signal loggers	page 12
Pulse loggers	page 14
Light data loggers	page 16
Multiloggers (RH, T°, C, V, Pulse) (current/voltage/humidity/temp. etc.)	page 18
Accessories	page 20
Software	page 22



# BENEFITS

- » High accuracy
- » Shock proof, IP65 housing (dust and water jet proof)
- » 20 bit A/D converter
- » Up to 32Hz sampling rate
- » Up to 4 years battery life
- » Up to 4 million readings (internal memory size)

## Robust

Yoyo data loggers are robust and used for measuring and recording a wide variety of variables: temperature, humidity, condensation, extra-low voltage, strain gauge, voltage, current, pulse, barometric pressure, as well as light and radiation.

The loggers are made of high quality, shock-proof POM-composed synthetic material. The devices are protected from water ingress according to IP65.

## Versatile, flexible & easy to operate

In order to meet the specific demands of various applications the loggers come in different designs and with different enclosures:

- » with integrated sensor (e.g. for monitoring shipments)
- » with connectable probes for differentiated analyses with different parameters
- » with sensor integrated in a 100mm stainless steel tube (e.g. for measurements in air ducts, or for pharmaceutical or biological research)

Probes can be easily connected to the logger through screw on connectors, allowing flexible use and quick exchange.

## High-quality and fast

The logger provides memory capacity for 100,000 readings (optional 4 million), which can be read out via USB within seconds via a transfer rate of 500 kbps.

## Long durability

The large memory capacity and the low current consumption allow logging for years without the need to monitor the device. The “continuous” mode makes it possible to overwrite old data with new readings. Should the battery be completely discharged during operation the integrated non-volatile flash memory will keep the readings safe.

## Status visualisation by LED

The yoyo data loggers are equipped with an integrated status LED which can be used for different functions:

- » displaying when a threshold has been exceeded
- » indicating low battery
- » displaying the data logging status (making it easy to identify the device's condition)



[amberinstruments.com](http://amberinstruments.com)

[sales@amberinstruments.com](mailto:sales@amberinstruments.com)



tel +44 (0)1246 260250

# TEMPERATURE, HUMIDITY & CONDENSATION LOGGERS

## Overview

TempLog and HumiLog are robust data loggers for measuring temperature and humidity. There are several models of loggers available: loggers with integrated sensors or loggers with up to 2 externally connectable probes. The standard probes include low cost sensors for humidity/temperature, surface humidity, surface temperature and condensation. HumiLog delivers accurate readings for humidity and temperature. Relative humidity can be measured with an accuracy of  $\pm 2\%$ . The accuracy for temperature measurements is  $\pm 0.3^\circ\text{C}$ . External temperature probes provide an accuracy of up to  $\pm 0.1^\circ\text{C}$ .

## Applications

Commonly used in the following industries: agriculture, lab & healthcare, building monitoring and environment.

### YL-T10 yoyo TempLog

Comes with integrated temperature sensor. Best suited for applications in refrigerators, carrier boxes, or for "field work" under rough conditions.



### YL-T10E yoyo TempLog

It's temperature sensor is integrated in a 100mm steel tube. It can be attached to the radiation protector YY-351-OM, installed in ventilation ducts, or it can be used to record product and medium temperature.



### YL-T11 yoyo TempLog

Data logger with connector for an external temperature probe (PT100/PT1000) See p. 20 for probes.



### YL-T12 yoyo Temp Log

Connectors for two external temperature probes (PT100/PT1000). See p. 20 for probes

### YL-RH20 yoyo HumiLog

Data logger with integrated sensor for humidity and temperature. Sensors covered by filter cap to protect from the elements.



### YL-RH20E yoyo HumiLog

The sensors for humidity and temperature are integrated in a 100mm steel tube. It can be attached to the radiation protector YY-351-OM in order to operate even during rainfall and solar radiation and still deliver accurate readings.



### YL-RH25 yoyo HumiLog

This data logger features an integrated sensor for humidity and temperature and provides additional connectors for two external probes. (PT100/PT1000). See p. 20 for probes.

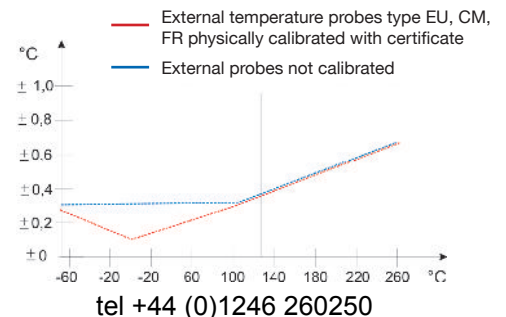
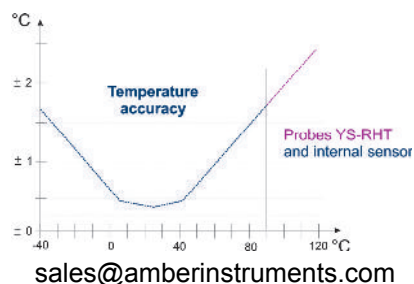
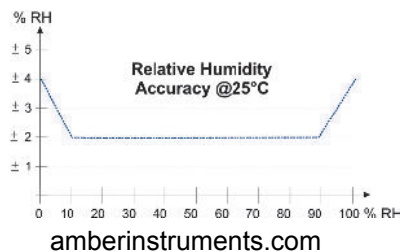


# SPECIFICATIONS

	YL-T10 TempLog	YL-T10E TempLog	YL-T11 TempLog	YL-T12 TempLog	YL-RH20 HumiLog	YL-RH20E HumiLog	YL-RH25 HumiLog
Sensor type	1 x integrated temperature sensor	1 x external temperature steel tube **	1 x external Pt100 or Pt1000	2 x external Pt100 or Pt1000	integrated 1 x Rh and 1 x temperature	1 x external temperature and RH steel tube	integrated temperature and RH, 2 x external Pt1000
Temperature operating range with standard battery (CR2477N)	-30 to +70 °C						
Temperature operating range with high temperature battery (CR2450HT)	-40 to +90 °C*						
Internal temperature sensor measuring range & resolution	-40 to +90 °C / 0.01 K						
Humidity sensor (internal & external)	0 to 100% RH / 0.01% RH						
Condensation sensor	bedewed / dry						
Dimensions d x h (mm)	Ø 50 / 30						
Memory capacity / optional upgrade	100,000 readings / 4 million readings						
Interval	1 sec to 24h	1 sec to 24h	1 sec to 24h or Fastmode 32Hz with Pt1000 sensor	1 sec to 24h or Fastmode 32Hz with Pt1000 sensor	1 sec to 24h	1 sec to 24h	1 sec to 24h
Enclosure	Robust, shock-proof POM, protection class IP65 (dust and spray proof)						
Standard lithium battery life	4 years @ 1 min. / 230 days @ 10 sec. / 25 days @ 1 sec.						
Included in delivery	Data logger, 1 battery, Software YoyoView, USB cable, manual, declaration of conformity						
Optional	YoyoView Plus Software, calibration certificate, wall holder, lead seal kit						

\* Using the logger within the extended operating range requires the use of the CR2450HT battery.

\*\* The steel tube of the YL-RH20E may be used from -40 to +100°C only, while the steel tube of the YL-T10E can be used with temperatures of up to +130°C.  
The given limitations of use for the external probes may change due to the cable used for connection. PVC cable type V can be used from -20 to +80°C, Teflon cable type G can be used from -70 to +250°C. The humidity probe YS-RHT120 may be employed only between -40 to +120°C.



# THERMOCOUPLE LOGGERS

## Overview

The thermocouple data logger is suited for measuring temperature with the following thermocouple types: K, T, J, B, E, N, R, and S. There are two models available: YL-T15 with one thermocouple input and YL-T16 with two thermocouple inputs.

The thermocouple logger has an integrated reference junction for temperature and delivers proper readings within a large temperature range. The resolution in the range of  $-100$  to  $+1300^{\circ}\text{C}$  is  $0.05\text{ K}$  with an accuracy of  $\pm 0.3\text{K}$ . To get the overall accuracy simply add the figures for the thermocouple.

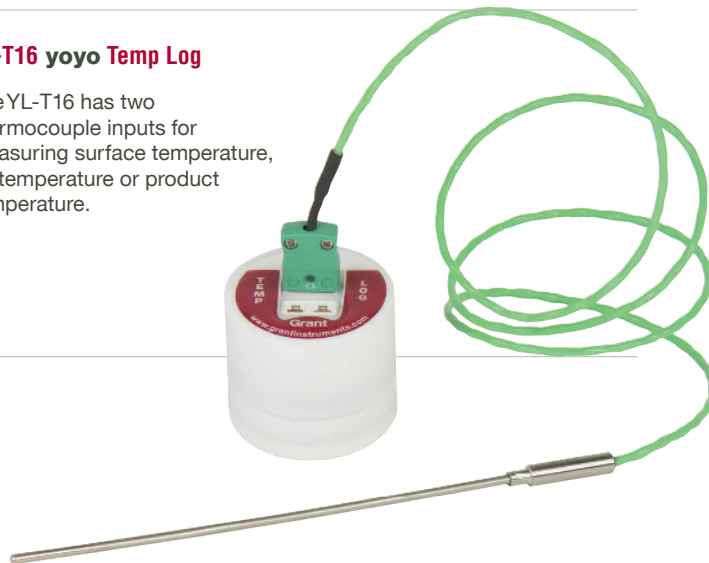
### YL-T15 yoyo Temp Log

The YL-T15 logger with one thermocouple input for measuring surface temperature, air temperature or product temperature.



### YL-T16 yoyo Temp Log

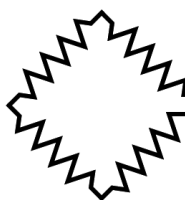
The YL-T16 has two thermocouple inputs for measuring surface temperature, air temperature or product temperature.



# SPECIFICATIONS

	YL-T15	YL-T16
Sensor type	1 x thermocouple input Type K, T, N, S, R, J, B, E	2 x thermocouple inputs Type K, T, N, S, R, J, B, E
Temperature operating range with standard battery (CR2477N)	-30 to +70 °C	
Temperature operating range with high temperature battery (CR2450HT)	-40 to +90 °C*	
Temperature probe range / resolution / accuracy	-100 to +1300 °C / 0.05K / Class 1&2	
Suitable thermocouples	Type K, T, J, B, E, N, R, S	
Dimensions d x h (mm)	50 / 45	
Memory capacity / optional upgrade	100,000 readings / 4 million readings	
Interval	1 sec to 24h / Fastmode 4, 2Hz	
Enclosure	Robust, shock-proof POM, protection class IP65	
Standard lithium battery life	4 years @ 1 min / 230 days @ 10 sec / 25 days @ 1 sec	
Included in delivery	Data logger, 1 battery, YoyoView Software, USB cable, manual, declaration of conformity	
Optional	YoyoView Plus Software, calibration certificate, wall holder, lead seal kit	

\* Using the logger within the extended operating range requires the use of the CR2450HT battery.



## Amber Instruments Ltd

Tel: +44 (0)1246 260250 | E-mail: [sales@amberinstruments.com](mailto:sales@amberinstruments.com)  
 Web: [amberinstruments.com](http://amberinstruments.com)  
 3 Mercury House, Calleva Park, Aldermaston, Berkshire, RG7 8PN.

Torque Transducers, Load Cells (general purpose, weighing & fatigue rated). Multi-Axis Force/Torque, Weighing Instruments, Process Instruments, Portable Data Loggers, Pressure Sensors, Proximity Sensors, Laser (Distance Measuring) Sensors, & more.

# TEMPERATURE, HUMIDITY & PRESSURE LOGGERS

## Overview

The RH & hPa logger is a robust device capable of logging humidity, temperature, and barometric pressure readings. With the aid of the software the device can be set to record either all variables or just individual variables.

## Applications

The pressure logger is suited for a variety of applications: environmental or climate studies, meteorological research, and also in clean rooms and laboratories.

### YL-RH23 yoyo RH/hPa Log

The YL-RH23 has built-in sensors for humidity, temperature, and barometric pressure.



### YL-RH23E yoyo RH/hPa Log

The humidity/temperature sensor is integrated in a 100mm steel tube.



### YY-351-OM Radiation Protector

The YL-RH23E can be attached to the radiation protector YY-351-OM, allowing it to provide reliable readings even during rainfall and radiation in outdoor operation.

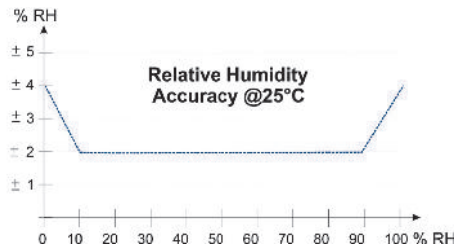
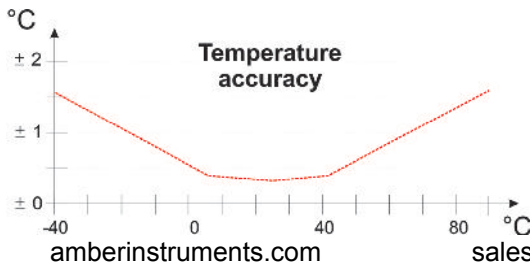




# SPECIFICATIONS

	YL-RH23	YL-RH23E
Sensor type	Built-in sensors 1 x temperature, 1 x RH, 1 x pressure	Built in temperature and RH sensor 2 x external sensors Pt1000
Temperature operating range with standard battery (CR2477N)	-30 to +70 °C	
Temperature operating range with high temperature battery (CR2450HT)	-40 to +90 °C*	
Temperature range/resolution	-40 to +90 °C / 0.01 K	
Humidity range/resolution	0 to 100% rF / 0.01% rF	
Barometric Pressure range/resolution	10 to 1100 hPa / 0.1 hPa	
Barometric Pressure Accuracy @25 °C Absolute Accuracy Relative Accuracy	± 1.5 hPa ± 0.5 hPa	
Dimensions d x h (mm)	50 / 33	
Memory capacity / optional	100,000 readings / 4 million readings	
Interval	1 sec to 24h / Fastmode 2Hz	
Enclosure	Robust, shock-proof POM, protection class IP65	
Standard lithium battery life	4 years @ 1 min. / 230 days @ 10 sec. / 25 days @ 1 sec.	
Included in delivery	Data logger, 1 battery, YoyoView software, USB cable, manual, declaration of conformity	
Optional	YoyoView Plus software, calibration certificate, wall holder, lead seal kit	

\* Using the logger within the extended operating range requires the use of the CR2450HT battery.



sales@amberinstruments.com

tel +44 (0)1246 260250

# MICRO VOLTAGE LOGGER

## Overview

The voltage and current data logger YL-M32 is a two-channel logger for recording extra-low voltage in the mV region and common reference voltage measurements, e.g. standard analog outputs (0..1V/0...5V/0..10V). The loggers can be used for recording small measurement signals such as from a Wheatstone bridge, force or range sensor, strain gauge, or extra-low voltages due to chemical balancing processes. The YL-M32 provides constant current for strain gauge sensors to supply the bridge. The devices are programmable so that you can log on either just a single channel or on both channels.

The logger features a 20 bit analog to digital converter giving a resolution of up to 150nV. The measuring range of the YL-M32 can be freely selected, enabling you to work with special measuring ranges such as from 10mV to 20mV at the same resolution.

---

### YL-M32 yoyo Micro V Log

The YL-M32 has sensors for humidity, temperature, and barometric pressure built-in in its enclosure



# SPECIFICATIONS

Strain gauges measurements as bridge circuits (for full bridges 60...7000hm)						
Range	mV	± 5	± 10	± 20	± 50	± 100
Resolution	µV*	0.15	0.3	0.6	0.8	1.5
Input impedance	Mohm	2.5	2.5	2.5	2.5	2.5

\* Strain gauge measurements allow a sample rate of up to 32 Hz in fast mode. The maximum resolution is ten times of the above value.

High impedance mode							
Range	mV	± 5	± 10	± 20	± 50	± 100	± 1000
Resolution	µV*	0.15	0.3	0.6	0.8	1.5	15
Input impedance	GOhm	1	1	1	1	1	1

\* High impedance mode allows for a maximum sample rate of 1 Hz.

Input Ranges									
Range	mV	0 to 10	0 to 20	0 to 50	0 to 100	0 to 1V	0 to 2.5V	0 to 5V	0 to 10V
Resolution	µV*	0.58	0.58	0.76	1.54	15.4	38.9	76.9	154
Input impedance	MOhm	2.5	2.5	2.5	2.5	2.5	0.1	0.1	0.1

\* input ranges can be measured at 32 Hz. At 32 Hz the maximum resolution is ten times of the above value.

	Current / Voltage logger YL-M32
Cable	DKC-S for ranges 0 to 1V DKC-U for ranges > 1V
Accuracy	0.1% of range
Dimensions d x h (mm)	50 /30
Memory capacity / optional	100,000 readings / 4 million readings
Interval	1 sec to 24h
Enclosure	Robust, shock-proof POM, protection class IP65
Standard lithium battery life	4 years @ 1 min / 230 days @ 10 sec / 25 days @ 1 sec
Included in delivery	Data logger, 1 battery, YoyoView Software, USB cable, manual, 2 connection cables
Optional	YoyoView Plus Software, calibration certificate, wall holder, carrying case, lead seal kit

# ELECTRICAL SIGNAL LOGGERS

## Voltage and current data loggers

### Overview

The YL-M33 and YL-M34 loggers are one or two channel data loggers for recording the variables of current and voltage. The devices are fully programmable and settable to 0 to 1V, 0 to 5V, 0 to 10V or 0 to 24mA. Corresponding cables are available for each measuring range. The logger can be used to record signals of almost every transmitter or probe as long as they provide adequate analog outputs.

The data logger has got a 20 bit analogue to digital converter which can provide a resolution of up to  $15\mu\text{V}$  or  $0.36\mu\text{A}$  (according to set range).

#### YL-M33 yoyo V & C Log

YL-M33 voltage and current logger features one channel with a programmable input for voltage or current



#### YL-M34 yoyo V & C Log

YL-M34 with two channels for voltage and current



# SPECIFICATIONS

Input Ranges						
Range		0 to 1V	0 to 2.5V	0 to 5V	0 to 10V	0 to 24mA
Resolution	μV	15.4	38.9	76.9	154	0.36μA
Input impedance	MΩ	0.1	0.1	0.1	0.1	10 Ωshunt

\* input ranges can be measured at 32 Hz. At 32 Hz the maximum resolution is ten times of the above value.

Note: A YY - CU cable with integrated potential divider is required in order to connect voltage signals. Current signals require the YY-CI cable.

	YL-M33	YL-M34
Number of inputs	1 x volt and current	2 x volt and current
Accuracy	0.1% of range	
Dimensions	d x h (mm)	
Memory capacity / optional	100,000 readings / 4 million readings	
Interval	1 sec to 24h / Fastmode 32, 16, 8, 4, 2Hz	
Enclosure	Robust, shock-proof POM, protection class IP65	
Included in delivery	Data logger, 1 battery, YoyoView Software, USB cable, manual, declaration of conformity	
Optional	YoyoView Plus Software, calibration certificate, wall holder, carrying case, lead seal kit	

# PULSE LOGGERS

## Overview

There are two models available: YL-M41 with one input channel and the YL-M42 with two input channels. Both are designed to measure potential-free pulses such as TTL signals or voltage signals of up to 3V. With the YY-CP connection cable the logger can be used for measuring signals up to 24V.

The devices are fully programmable allowing you to set the logger to record on one or two channels. The incoming signal (potential-free/voltage) can be set using the software. The logger is best suited for operation with counters, photoelectric sensors, revolution-counters, make contact elements, switches and sensors with pulse output.

## Applications

Typically used in rainfall measurement and industrial sectors measuring flow rate (pulse) with flowmeter or pulse energy in building monitoring.

### YL-M41 yoyo Pulse Log

The YL-M41 has one input channel. The logger can also be integrated into the aerodynamic rain gauge YY-RG.



### YL-M42 yoyo Pulse Log

The YL-M42 has two input channels with an option to record on one or two channels. The logger can also be integrated into the aerodynamic rain gauge YY-RG.



# SPECIFICATIONS

	YL- M41	YL- M42
Number of channels	1	2
Measuring pulses (potential-free) / range / resolution	0 to 65 000 pulses, interval of 0 to 100 pulses / sec. 1Hz / 1 pulse	
Voltage pulses / range / resolution	0 to 65 000 pulses, interval 0 to 1300Hz 1Hz / 1 pulse	
Signal input	Potential-free signals or low level pulses < 0,5VDC and high level between 2 and 3 VDC can be processed. *	
Dimensions d x h (mm)	50 / 30	
Memory capacity / optional	100,000 readings / 4 million readings	
Enclosure	Robust, shock-proof POM, protection class IP65	
Included in delivery	Data logger, 1 battery, YoyoView Software, USB cable, connection cable YY-CS(max.5V), manual, declaration of conformity	
Optional	YY-CP connection cable (2 m for pulses with voltages from 5 to 24V YoyoView Plus Software, calibration certificate	

\* Higher levels up to 24 V require the YY-CP cable.

# LIGHT DATA LOGGERS

## Overview

The YL-M61 records illuminance with a spectral sensitivity adjusted to the spectrum of the human eye, whilst the YL-M62 version is also equipped with an additional humidity and temperature sensor. A range of sensors with different spectral ranges are available, suitable for use in scientific research.

## Applications

These robust data loggers are equally suited for operation indoors, outdoors or under water. Commonly used in workplace studies, weather stations, museums, street lighting or showcase lighting.

### YL-M61 yoyo Lux Log

The YL-M61 records luminosity with a spectral sensitivity adjusted to spectrum of the human eye.



### YL-M62 yoyo Lux / RH / T° Log

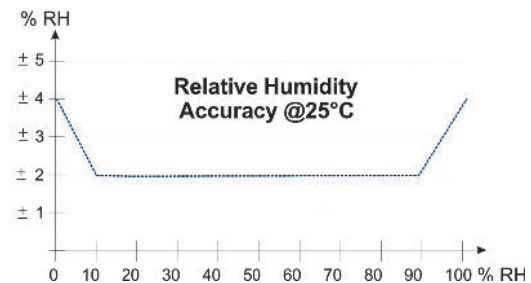
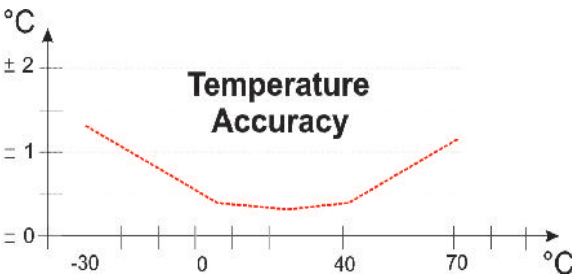
The YL-M62 records luminosity with a spectral sensitivity adjusted to spectrum of the human eye. In addition the logger is equipped with additional sensors for humidity and temperature





# SPECIFICATIONS

	YL- M61	YL- M62
Sensor type	Single channel for luminance	Single channel for luminocity, integrated 1 x temperature, 1 x humidity sensors
Measuring range Light / Relative humidity / Temperature	0 to 40 000 Lux / 0 to 100%RH / -30 to +70°C	
Dimensions d x h (mm)	50 / 33	
Memory capacity / optional	100,000 readings / 4 million readings	
Interval	1 sec to 24h	
Enclosure	Robust, shock-proof POM, protection class IP65	
Included in delivery	Data logger, 1 battery, YoyoView Software, USB cable, connection cable YY-CS (max.3V), manual, declaration of conformity	
Optional	YY-CP connection cable (2 m for pulses with voltages up to 24V YoyoView Software, calibration certificate	



# MULTILOGGERS

## Overview

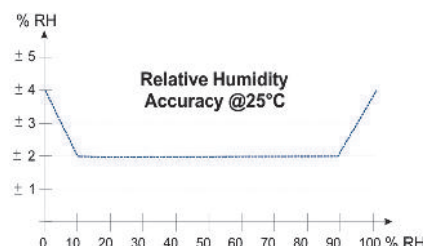
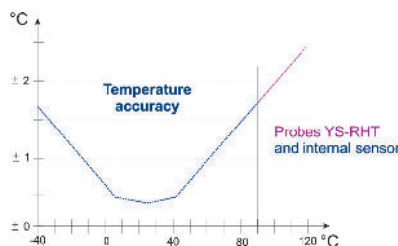
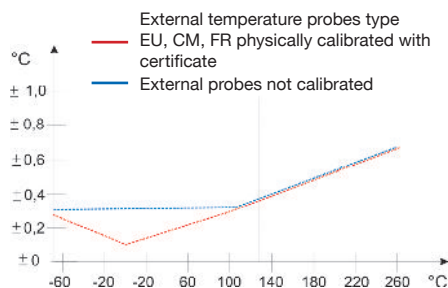
The YL-M90 is a rugged and powerful miniature fully configurable data logger capable of recording up to 6 parameters. It has an integrated humidity/temperature sensor and two additional inputs which can be configured with YoyoView software.

A selection of probes and transducers are available for each parameter. Please see page 20 for further details. The following inputs can be configured for the YL-M90:

- » Humidity and temperature - integrated
- » Temperature (PT1000, PT100)
- » Humidity/temperature (for combined humidity/ temperature probes, e.g. YS-RHT, YS-RHT-XXS etc.)
- » Current/voltage ( $\mu\text{V}$  range, 0-1V/0-5V/0-10V, 0-20mA), radiation, CO<sub>2</sub>, air velocity and many more
- » Moisture, pulse or frequency: e.g. For revolution counters, rain gauges, photoelectric sensors, etc.

### YL- M90 yoyo Multi Log

The YL-M90 is capable of logging up to 6 parameters. Commonly used in industries such as building monitoring, agriculture, environment, industry, lab and healthcare, environment.



# SPECIFICATIONS

		YL- M90 Multi logger
Internal temperature	range / resolution	-40 to +90 °C / 0.01K
External temperature	range / resolution	-70 to +250 °C / 0.01K
External temperature probe		Pt1000 or Pt100
Internal/external humidity sensor	range / resolution	0 to 100RH / 0.01%RH
Potential-free pulses	range / resolution	0 to 65,000 pulses, interval 0 to 100 pulses per sec / 1Hz, 1 pulse
Voltage pulses	range / resolution	0 to 65,000 pulses, interval 0 to 1300 Hz /1Hz, 1 pulse
Signal input		Potential-free signals or low level pulses < 0.5VDC and high level between 2 and 3VDC can be processed with the standard cable YY-CS (included in delivery) *
Temperature operating range with standard battery (CR2477N)		-30 to +70 °C * *
Temperature operating range with high temperature battery (CR2450HT)		-40 to +90 °C
Dimensions	d x h (mm)	50 /30
Memory capacity / optional		100,000 readings / 4 million readings
Interval		1 sec to 24h / Fastmode 2Hz
Enclosure		Robust, shock-proof POM, protection class IP65
Included in delivery		Data logger, 1 battery, YoyoView, USB cable, manul, declaration of conformity
Optional		YoyoView Plus, calibration certificate, lead seal kit, wall holder

\* Higher levels require up to 24 V DKC-P cable.  
PVC cable type V can be used from -20 to +80°C, Teflon cable type G can be used from -70 to +250°C.  
The humidity probe YS-RHT120 may be used only between -40 to +120°C.

Voltage and Current								
Range	mV	0 to 10	0 to 20	0 to 50	0 to 100	0 to 1V	0 to 5V	0 to 10V
Resolution	µV*	0.58	0.58	0.76	1.54	15.4	76.9	154
Input impedance	MOhm	2.5	2.5	2.5	2.5	2.5	0.1	0.1
Voltage	range/resolution	0 to 24mA / 0.36µA						
Accuracy		0.1 % of range						
Signal input		Lower signals (max 1V) can be processed with the standard cable YY-CP. Higher voltage levels require the connection cable YY-CP.						

# ACCESSORIES

**For YL-T11, YL-T12, YL-RH25, YL-M90**

Temperature sensors for YL-T11 TempLog and YL-RH25 HumiLog

**YS-CML Standard temperature probe**  
d=4mm, l=100mm



**YS-CMS Standard temperature probe**  
d=4mm, l=50 mm



**YS-EU Surface temp. sensor**  
l=20mm, w=10mm



**YS-EUM Surface temp. sensor**  
with magnet (e.g. for masonry)  
l=25mm, w=14mm



**YS-FR Air temperature sensor**  
d=4mm, l=17mm, extra fast response time



**YS-MT Sheathed thermocouple**  
d=3mm, l=200mm, for high temperatures up to 1200°C



Sensors for YL-RH25 HumiLog

**YS-RHT - Measures humidity and temperature**

Operating range: -20 to +80°C or -40 to +120°C with special cable type G. Dimensions: 8 x 35mm



**YS-RHT0 - Probe for measuring humidity and temperature**

Suitable for measuring temperature and humidity in wall and boundary levels. Range: -20 to +80°C. D=30mm x h=10mm



**YS-SHS - Detects incipient moisture**

Operating from 0 to 50°C. Dimensions: 43 x 10mm



### YS-RHTW - Special probe for measuring humidity/temperature

Suitable for use in confined spaces or wall surfaces. Dimensions: l=45mm, w=20mm



### YS-RHT-XXS Extra small probe

Dimensions d=4mm and l=20mm.  
Sensor cable: 2m  
Operating temperature from -40 to +120°C



## Other accessories

### Wall Holder for Temp or Humi log

Enables you to install the logger on walls, also allows the installation of a lead seal.



### Lead seal kit for Temp and Humi Logs

Contains 50 pieces of wire and 50 numbered lead seals for non-recurring use, which have to be manually pressed together.



### Rain Gauge YY-RG and YY-B1



### Radiation Protector for YY-31-OM



## Cables

The standard probes are equipped with a PVC cable type V and can be used within the range from -20 to +80°C. If desired, cables made of Teflon (type G) can be used to enlarge the operating range to -75 to +250°C. The YS-RHT120 can operate within the range of -40..+120°C with the Teflon cable.

Example for the product identifier: YS-CMS80-2 for standard temperature probe with 2m PVC cable or YS-CML120-2 with 2m Teflon cable

# YoyoView SOFTWARE

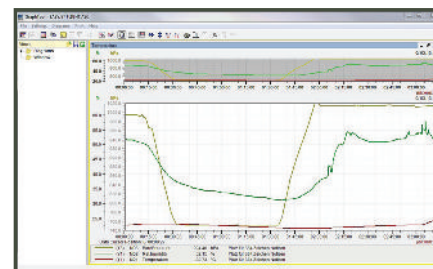
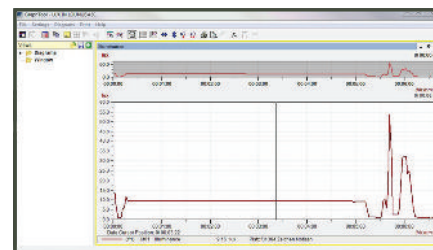
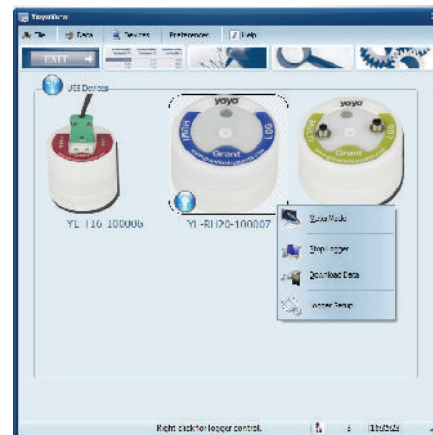
## YoyoView (part number YY-100)

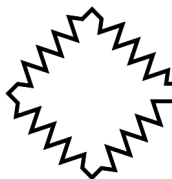
The basic software, included with the logger, is suitable for configuring the logger, downloading basic data and exporting data. The yoyo logger can be connected to laptop or PC via a USB port.

## YoyoView Plus software (part number YY-200)

In addition to the functionalities of the basic software, the optional upgrade offers more complex analyses of data, charts and statistics.

- » Three scaleable Y-axes
- » Zoom function
- » Cursor readings
- » Display in spreadsheet format
- » Combination of a series of measurements in one chart
- » Definition of thresholds
- » Y/T-charts (values over time)
- » Statistics (min, max, and average values)
- » Online metering (display actual values)





# Amber Instruments Ltd

---

Tel: +44 (0)1246 260250 | E-mail: [sales@amberinstruments.com](mailto:sales@amberinstruments.com)  
Web: [amberinstruments.com](http://amberinstruments.com)  
3 Mercury House, Calleva Park, Aldermaston, Berkshire, RG7 8PN.

Torque Transducers, Load Cells (general purpose, weighing & fatigue rated). Multi-Axis Force/Torque, Weighing Instruments, Process Instruments, Portable Data Loggers, Pressure Sensors, Proximity Sensors, Laser (Distance Measuring) Sensors, & more.

[amberinstruments.com](http://amberinstruments.com)

[sales@amberinstruments.com](mailto:sales@amberinstruments.com)

tel +44 (0)1246 260250